

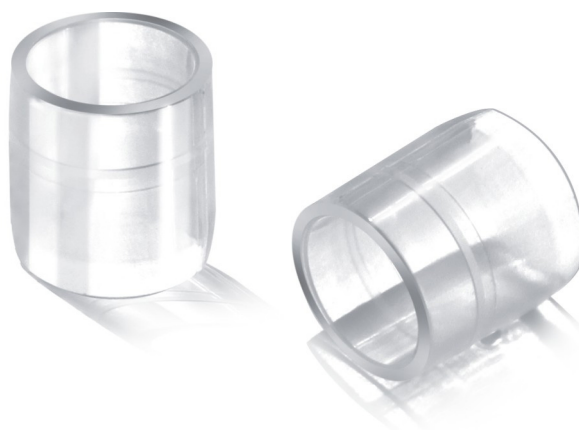
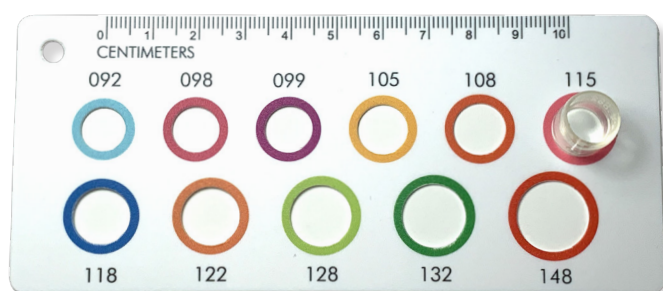
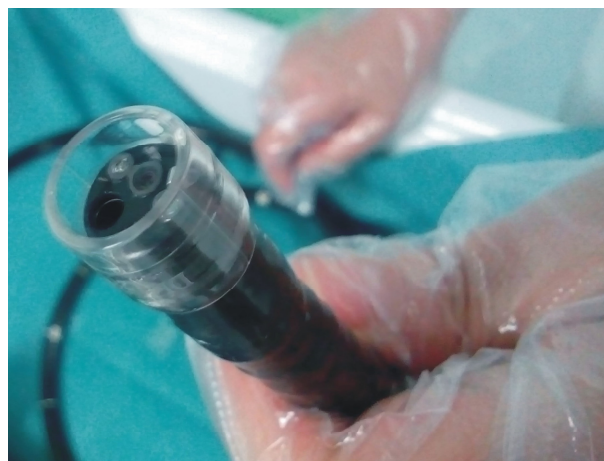
DISPOSABLE ENDOSCOPIC DISTAL ATTACHMENT

Distal Cap

A visualisation cap, used on the distal end of an endoscope and available in a range of sizes to fit most diagnostic and therapeutic endoscopes. The soft material protects the tissue while introducing the endoscope and maintains a good field of view. They are widely used in Colonoscopy procedures and help to unfold the colon, plus EMR, ESD and POEM surgeries.

Advantages:

- Maintains a good field of view during endoscopy.
- Helps to unfold the colon during colonoscopy procedures.
- Provides more working space in surgery.
- Protects the tissue.
- Compatible with a range of scope sizes.



MODEL	DISTAL SIZE	WORKING DISTANCE	MATCHING ENDOSCOPE
SH-XT-DL-092-40	9.0~9.2mm	4.0mm	EG-2790K, EG-2770; GIF-Q260, GIF-H190
SH-XT-DL-098-40	9.6~9.8mm	4.0mm	GIF-H260, GIF-H180, GIF-HQ190, PCF-PH190L/I
SH-XT-DL-099-40	9.7~10.1mm	4.0mm	EC-2990Li, EC-2990Fi, EC-2990Mi, EG-2990K
SH-XT-DL-105-40	10.3~10.7mm	4.0mm	PCF-Q260J, EC-3490TLi, EG-2990Zi, EG-2990K
SH-XT-DL-108-40	10.6~11.0mm	4.0mm	GIF-H260Z, EG-590ZW, EG-450CT5, EG-2990i
SH-XT-DL-115-40	11.3~11.7mm	4.0mm	PCF-H180Al/L, PCF-H190Di/L, EG-3470K, EC-3470MK/FK/LK, EG-3490K, EC-3490FK/Fi/LK, EG-450D5
SH-XT-DL-118-40	11.6~12.0mm	4.0mm	GIF-2T240
SH-XT-DL-122-40	12.0~12.4mm	4.0mm	CF-Q260A, CF-Q260D
SH-XT-DL-128-40	12.6~13.0mm	4.0mm	EC-3890LZi/FZi/MZi, EC-380Kp, EC-250WM5, EC-590WM/ZW, EC-530WM/Wi, EC-450WMS/Wi5
SH-XT-DL-132-40	13.0~13.4mm	4.0mm	CF-Q180AL/I, CF-H190L/I, CF-HQ190L/I, EC-3890TFK/TLK, EC-3890Mi/Fi/Li, EG-3890TK
SH-XT-DL-148-40	14.6~15.0mm	4.0mm	CF-H260AZL/I